



Hui a Tau
Annual Shareholders Meeting
October 2022



East Cape
New Zealand



Hui a Tau
Annual Shareholders Meeting
October 2022

Rua Bioscience Limited (Rua) is a New Zealand pharmaceutical company aiming to be a leading producer of cannabinoid derived medicines. This presentation and the information contained in or accompanying this presentation are not, and are under no circumstances to be construed as, an invitation to subscribe for, or an offer of, shares, securities or financial products to any person, in any country or the basis for a contract, financial advice, other advice or recommendation to conclude any transaction for the purchase or sale of any security, loan or other instrument. This presentation has not been independently verified. Neither Rua nor any of its directors, officers, shareholders, advisors, agents or employees make any representation or warranty as to the accuracy or completeness of the information contained in this presentation and those parties shall have no liability for any statement, opinion, information or matters arising out of, contained in, or for any omissions from, or failure to correct or update any information in, this presentation or any other communications transmitted to you in relation to this presentation.

How to Participate in Virtual/Hybrid Meetings (Q&A)

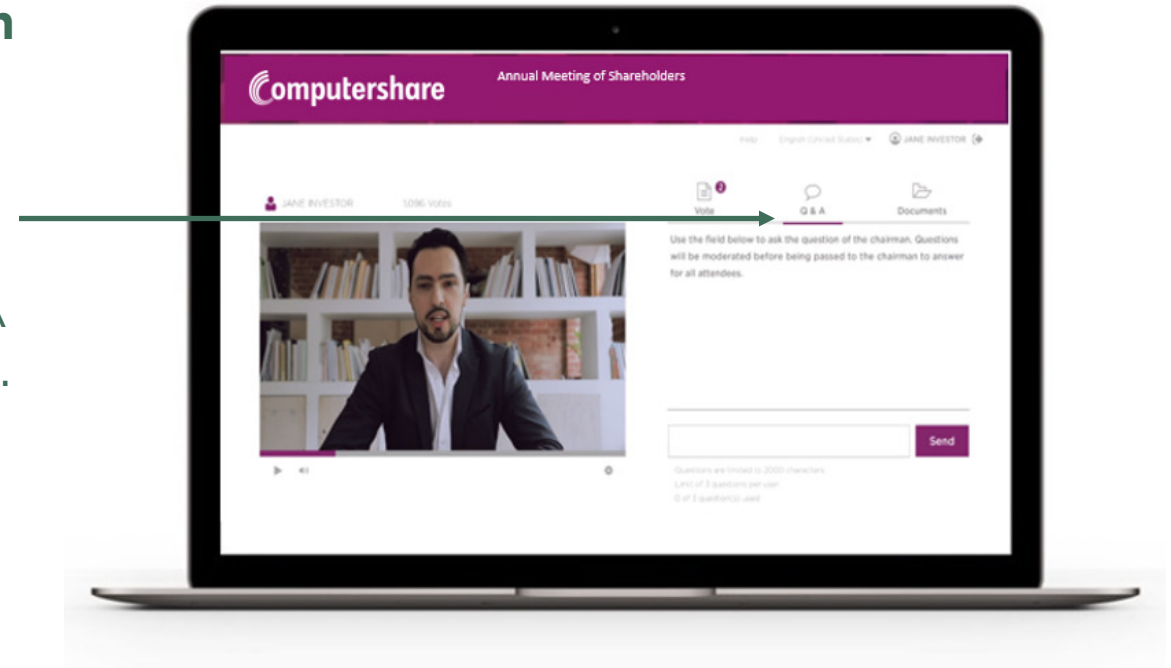
Shareholder & Proxyholder Q&A Participation

Written Questions

Questions may be submitted ahead of the meeting. If you have a question to submit during the live meeting, please select the Q&A tab on the right half of your screen at anytime. Type your question into the field and press submit. Your question will be immediately submitted.

Help

The Q&A tab can also be used for immediate help. If you need assistance, please submit your query in the same manner as typing a question and a Computershare representative will respond to you directly.



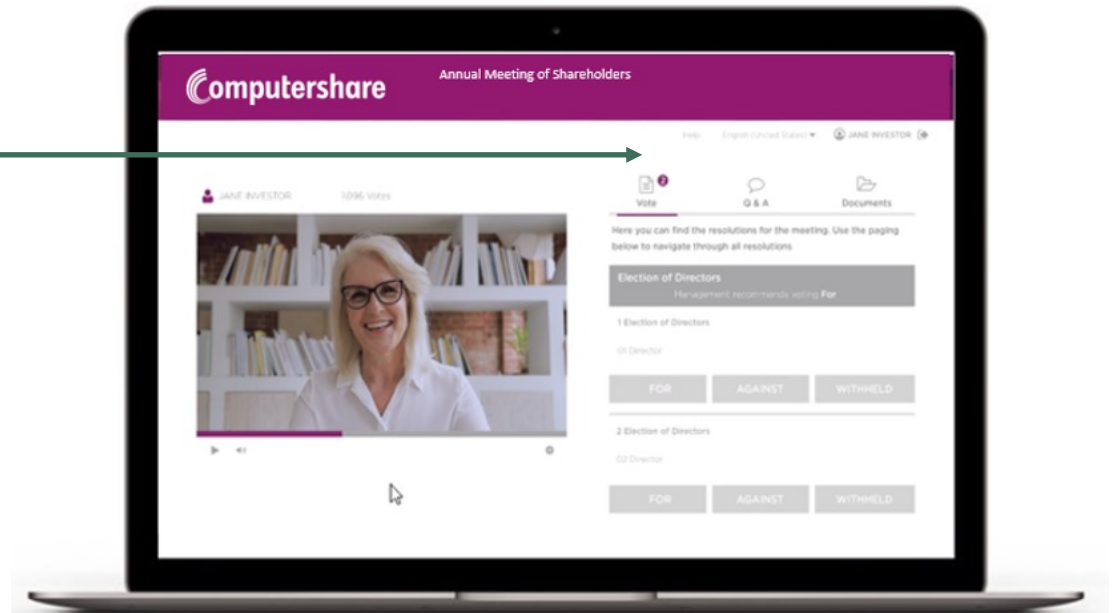
How to Participate in Virtual/Hybrid Meetings (Voting)

Shareholder & Proxyholder Voting

Once the voting has been opened, the resolutions and voting options will allow voting.

To vote, simply click on the Vote tab, and select your voting direction from the options shown on the screen. You can vote for all resolutions at once or by each resolution.

Your vote has been cast when the tick appears. To change your vote, select 'Change Your Vote'.



Board of Directors – Leadership to Grow Rua

TREVOR BURT



Independent
Chairman
Global executive roles
with a Fortune 500
company, Director
PGG Wrightson, Silver
Fern Farms, Chair of
Lyttelton Port and the
NZ Lamb Company.

PANAPA EHAU



Director, Co-Founder
Co-founder of a
number of social
enterprises and
holds governance
roles across
numerous for-profit
and charitable
organisations.

BRETT GAMBLE



Director
20 years' global
experience in
investment and
corporate finance.
Executive Director of
Alvarium Investments
Valued at \$1.4bn with
\$54bn in managed
investments.

ANNA STOVE



Independent Director
25 years' experience
leading
pharmaceutical
businesses across
Asia, Europe and NZ
including General
Manager of GSK NZ.
Director of Pacific
Edge & Deputy Chair
TAB NZ

MARTIN SMITH



Independent Director
25 years' experience
in the consumer
goods sector. Former
Country Manager of
L'Oréal New Zealand
and Regional Director
for L'Oréal Asia
Pacific and Eastern
Countries.



Leadership Changes

Rob Mitchell

CEO

Since his appointment as CEO in February 2020, Rob has built a world-class team, leading them through significant milestones.

- Rua launched on the NZX
- Gained GMP certification.
- Launched our first product in New Zealand.
- Developed new global market opportunities.



Co-Founder Refocuses

Manu Caddie

Co-Founder, Kaihautu innovation and Regulation

Cofounded Rua in 2016.

Is part of a small group who can claim to have built the industry in Aotearoa from the ground up.

Globally recognised leadership and expertise in the regulatory and research areas.

Constant advocate for the ethical evolution of the industry.



Agenda

1. Company Overview and Chair's Address
2. Managing Director's Presentation
3. Annual Results Presentation
4. Shareholder Questions
5. Ordinary Resolutions
 1. Auditors Remuneration
 2. Re-election of Trevor Burt
 3. Re-election of Brett Gamble
 4. Re-election of Teresa Ciprian
6. General Business

Company Overview and Chair's Address



Te Rautaki o Rua

Our Strategy – Focus and Objectives



Creating Unique Product and Plant IP

- Create unique, sustainable and protected IP, cultivation techniques
- Develop commercially viable varieties of cultivars
- Use research partners to develop IP



Developing New Products and Markets

- Create new, protected product formulations
- Develop new, attractive markets
- Achieve sustainable revenue



Optimising Cultivation and Processing

- Achieve excellence in cultivation & processing techniques
- Develop cultivation partnerships to expand production
- Obtain licences and approvals for all processes, products, markets



Developing our People

- Build a capable and committed team
- Create employment pathways for Te Tairāwhiti residents

Māwhiti mai ki ngā Whakatutukitanga

Achievements at a Glance



Rua received Good Manufacturing Practice (GMP) certification from Medsafe.



Rua received verification that its first medicinal cannabis product meets Medsafe's quality standards.



Rua welcomed the East Coast Cannabis Company (E3C) as its first local cultivation partner.



Rua shareholders approved the purchase of Zalm and its supply contract with Cann Group.

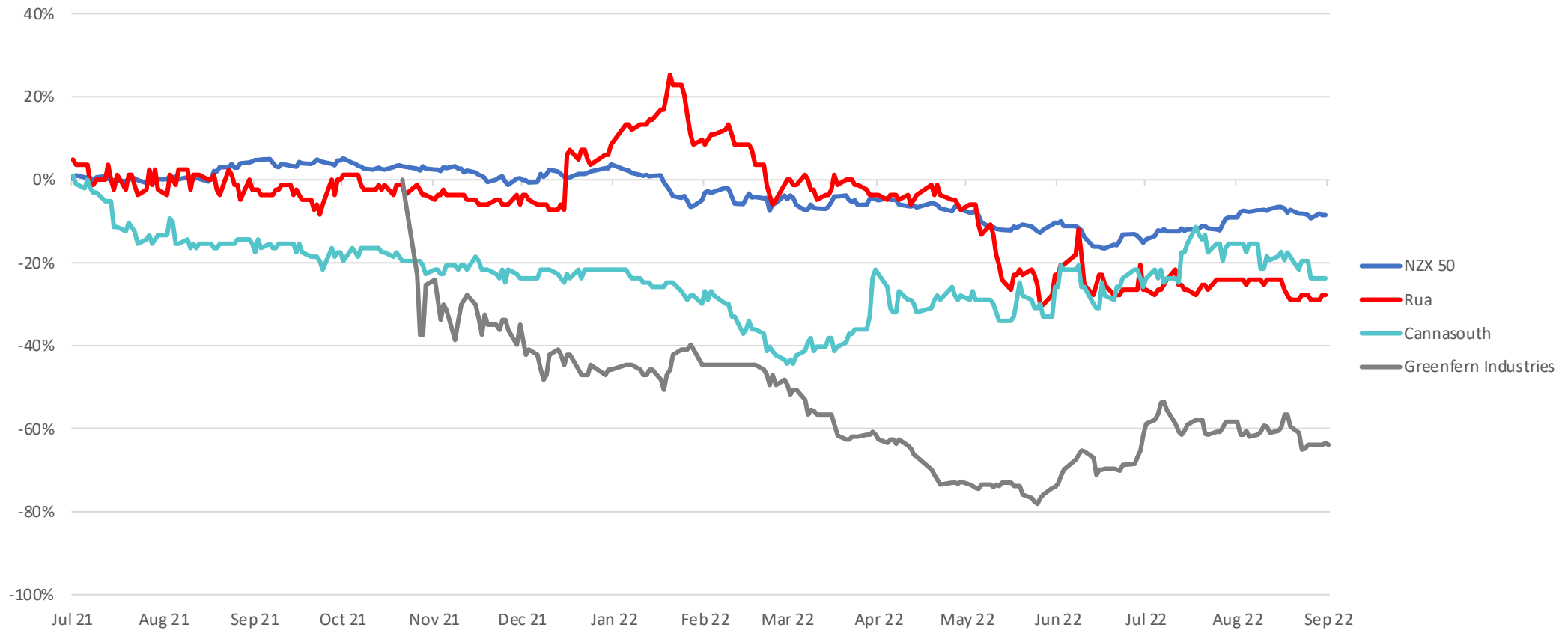


Rua launched its first medicine for New Zealand patients.



Rua received its narcotic license through Nimbus Health for its first product for the German market.

Volatility in the NZ Market



Managing Director's Presentation





Tirohanga Whānui FY22: An Overview

In past year, Rua has been focused on preparing for market entry

- Securing partners and developing the frameworks and strategies that will give the company the best chance of success both at home and globally.

Rua's Operational Priorities

Leveraging our Cann cultivation and processing facility to launch products to Germany

Developing the European market

Manufacturing CBD100 in Gisborne & increasing our market share in NZ

Continue to discover interesting new, illicit varieties at Ruatorea - ultimately growing chosen varieties at scale in Australia

Photo Credit: Cann Group

Leveraging our Cann Production Capacity to Service Global Markets

Cann Group have announced that the GMP manufacturing licence for the Company's flagship Mildura facility, has been extended to cover the manufacture and release of finished dried-flower products for patient use.

Rua will leverage this to deliver a range of medicinal cannabis products to multiple export markets.

Photo Credit: Cann Group

Rua Significantly Advances German Market Entry

We have just received our first order from German distributor, Nimbus Health, marking a significant commercial milestone and cementing export revenues.

Advancing our Export Strategy

Going global to support local



Germany

💰 **€7.7b** by 2028

👥 **60,000** Currently

Poland

💰 **€2b** by 2028

👥 **4,122** Currently

Czechia

💰 **€5m** by 2023

👥 **2,833** Currently

The United Kingdom

💰 **€1b** by 2029

👥 **2,900** Currently

Source:

The European Cannabis Report: 7th edition: Reports. Prohibition Partners. (2022, April 8). Ret'd May 25, 2022.

Entering the NZ Market

The launch of Rua's first medicine in Aotearoa was a milestone for New Zealand patients, prescribers and the medicinal cannabis industry.

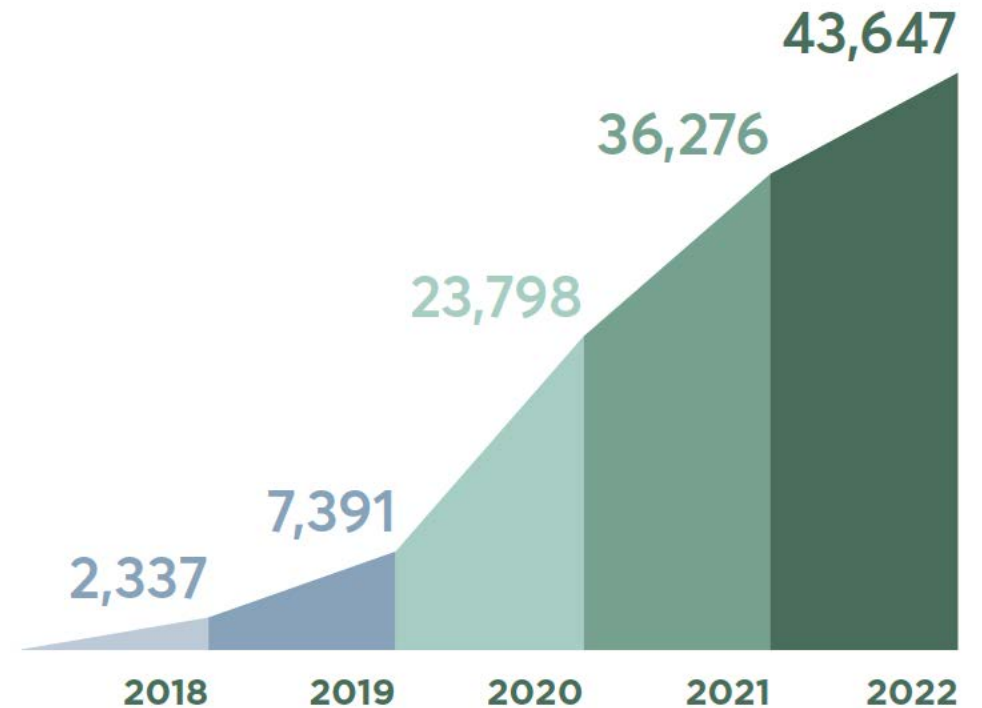


NZ market grows as practitioners are increasingly willing to trial medicinal cannabis

New Zealand's CBD market is growing rapidly off a small base.



CBD PRODUCTS (units)
SUPPLIED PER ANNUM TO
THE NZ MARKET



Source: Ministry of Health, 2022

Ruatorea - our home of genetic innovation

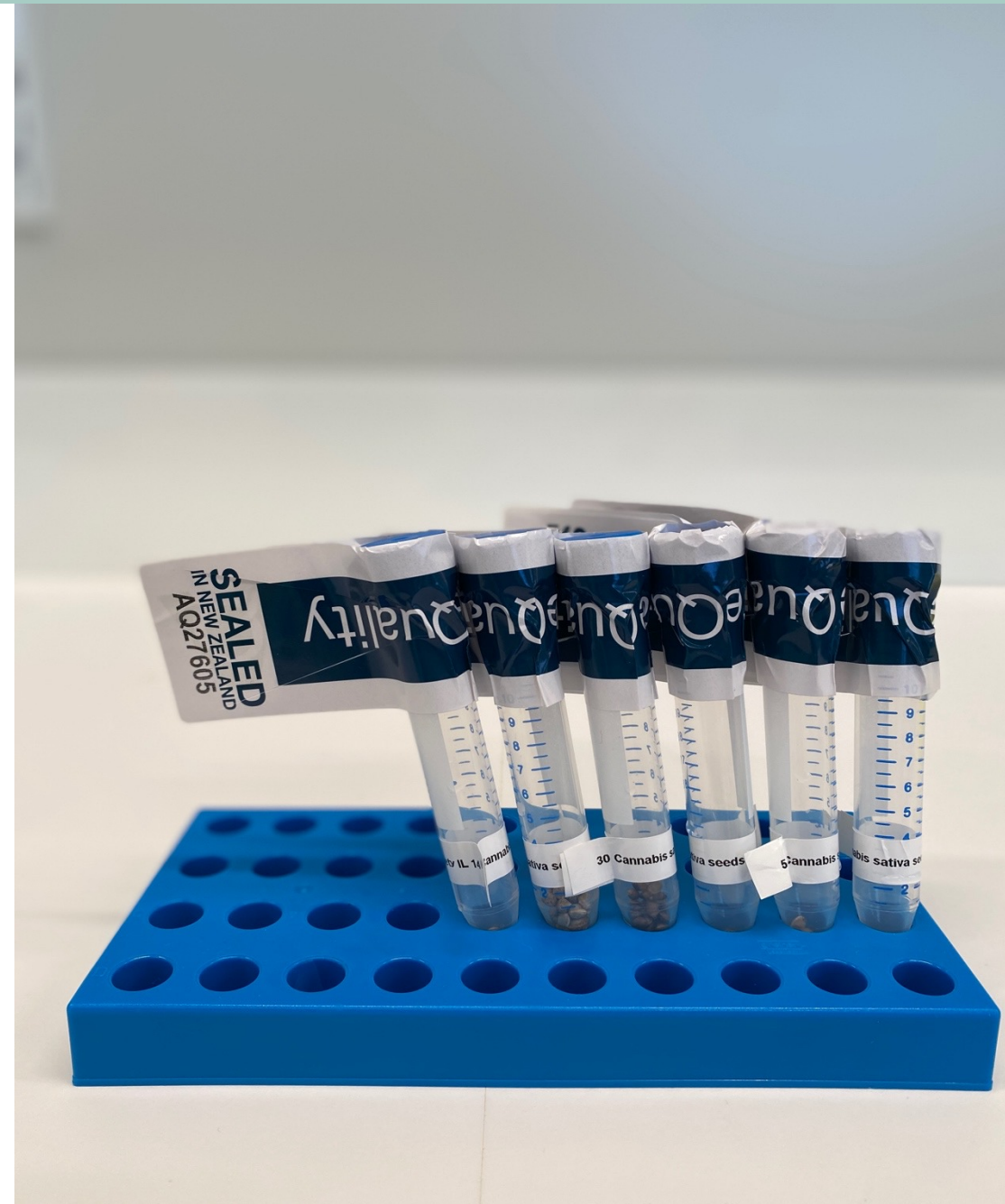
Continue to discover interesting new, illicit varieties at Ruatorea - ultimately growing chosen varieties at scale in Australia.



Rua recently exported its first seeds to Australia

It is a first step in establishing the processes we need to send genetics to Australia where we can grow at a global scale.

It also demonstrates that, in time, we will be able to export unique East Coast genetics from Ruatorea to the world.

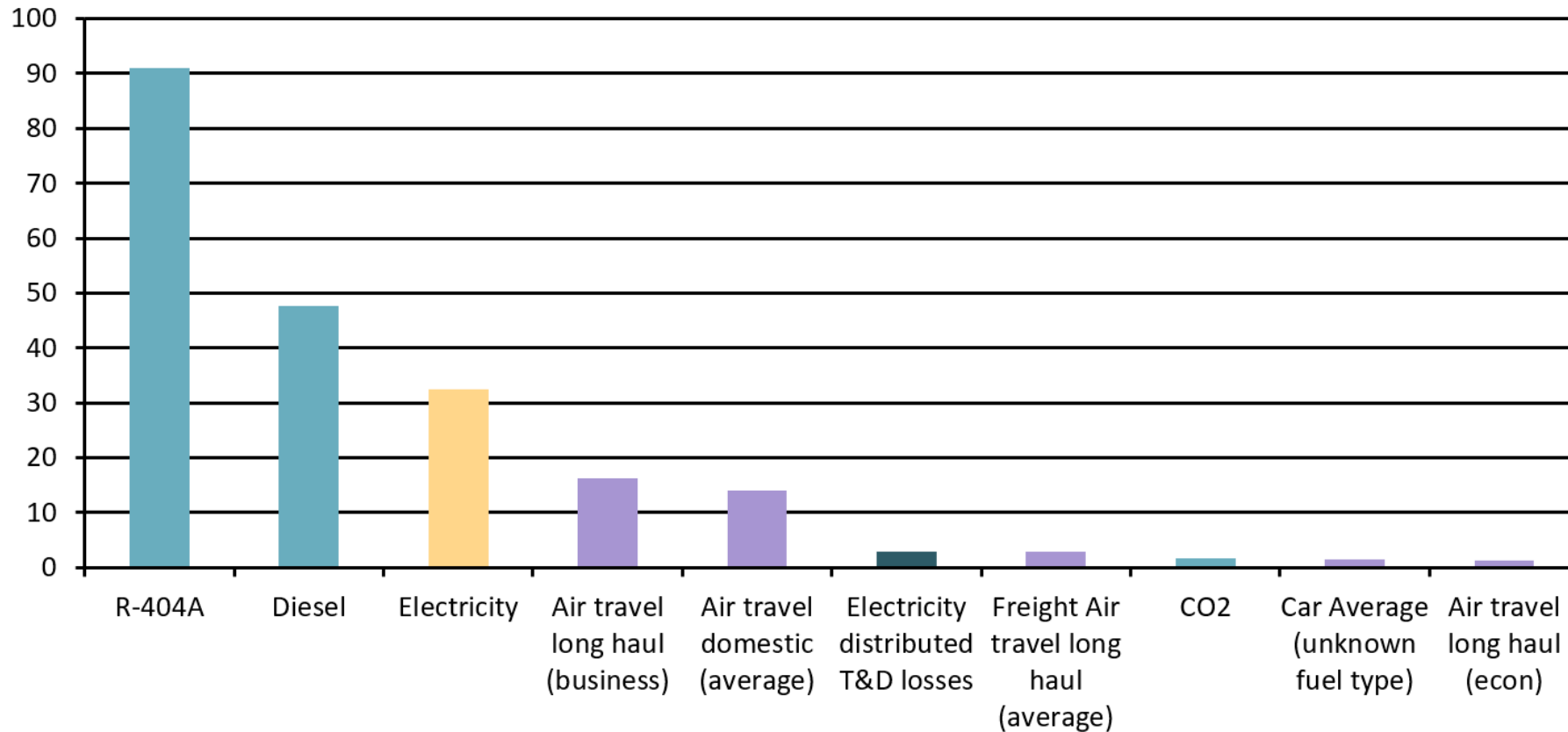


We are a business with a deep sense of kaitiakitanga

Impact Area	Target FY22	Status
Environmental	Toitū Envirocare carbon audit completed and transition plan approved.	In progress
	Sustainable packaging policy adopted and recyclable packaging investigated.	Complete
	GACP certification process undertaken for Mangaoporo site.	In progress
Social	Contribution made to NZMCC prescriber education programme.	On hold
	Community impact monitoring framework established.	In progress
	Two internships. Two work experience. Six scholarships.	Complete
	Mechanism for illicit varieties to enter legal market established.	Complete
Governance	Code of Ethics and Ethics Complaint Process added to Code of Conduct.	Complete
	Ethics training completed by all staff.	Complete
	Anti-corruption policy adopted.	Complete
	Modern Slavery policy adopted.	Complete
	All staff complete diversity and inclusion training.	Complete

Baseline for CO2 emissions established, plan in progress to reduce

Top 10 GHG emissions (tonnes CO₂e) by source



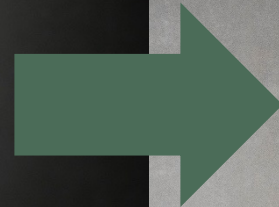
Continuing our commitment to drive community change

Focusing on inspiring the next generation of scientists and entrepreneurs.



RUA

Leadership Changes

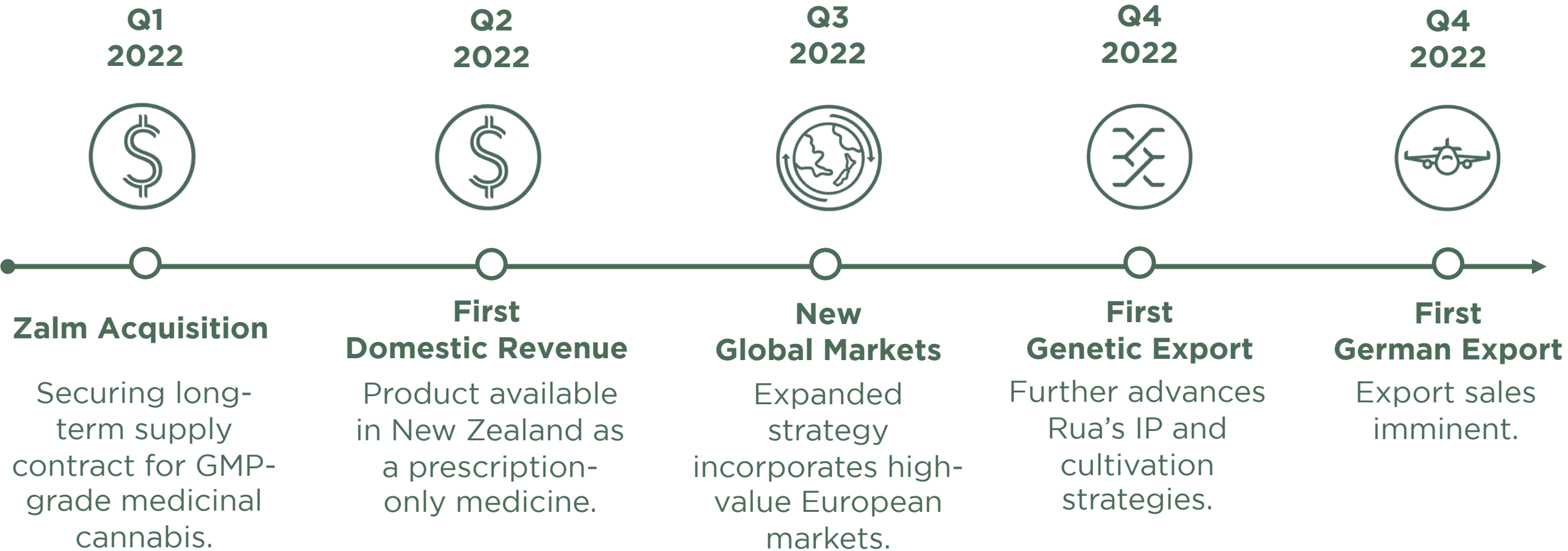




Rightsizing Rua

Rebuilding Culture and Kaupapa

Pathway to Sustainable Revenue



Annual Results



Rua Receives First Revenues

Total income **\$646k**

Investment in R&D **\$2.98m**

Loss before tax **\$7.49m**

Nga Pūtea Financial Highlights Profit & Loss

Rua's annual financial results for the year the ended 30 June 2022.

Rua Remains Well Capitalised

Cash, Cash Equivalents & Investments **\$9.94m**

Total Assets **\$33.57m**

Total Liabilities **\$9.38m**

Net Assets **\$24.2m**

Nga Pūtea Financial Highlights Balance Sheet

Rua's annual financial results for the year the ended 30 June 2022.

Investing in the Future

Net cash outflow from operating activities **\$6.84m**

Net cash inflow from investing activities **\$5.59m**

Net cash outflow from financing activities **\$209k**

Nga Pūtea Financial Highlights Cashflow

Rua's annual financial results for the year the ended 30 June 2022.

Shareholder Questions

Ordinary Resolutions



Resolution One

That the Board be authorised to fix the auditor's remuneration.

That Trevor Burt be re-elected as a director of Rua.

BSc, Chartered Fellow of the Institute of Directors.

Trevor brings extensive corporate executive and governance experience to Rua Bioscience, having served in global executive roles with a Fortune 500 company, on the boards of innovative agricultural companies such as NZX-listed PGG Wrightsons, Silver Fern Farms and Market Gardeners NZ, and as Chair of Lyttleton Port and Ngai Tahu Holdings and the New Zealand Lamb Company.

Trevor was appointed as Director and Chairman of Rua in August 2019.



That Brett Gamble be re-elected as a director of Rua.

BCom, Chartered Accountant (member of CA ANZ).

Brett is an investment and finance specialist with global connectivity having lived and worked in USA, UK, Australia, and New Zealand. He is currently CEO of Gough Investments and Executive Director of Alvarium Investments (NZ). Brett is also a current Director of Alvarium Investments Australia, Mike Greer Homes, Mojo Coffee and Mobile Medical Technologies and was previously Chair of Enable Networks and a director of Southbase Construction. Brett also Chairs a South Island based cancer charity, Chalky Carr Trust.

Brett was appointed a Director of Rua in November 2019.



That Teresa Ciprian be re-elected as a director of Rua.

Chartered Member of the Institute of Directors.

Teresa has an exceptional background in highly competitive global FMCG businesses. A Chartered member of the Institute of Directors, Teresa brings strong governance capability having served on boards including Firstlight Foods Ltd, AgResearch, Prolife Foods, Food Standards Australia and New Zealand and Zespri. Teresa has a track record of helping develop highly capable leaders, strong brands, accumulating IP and seeing organisations flourish through continuous improvement.

Teresa has been a Director of Rua since August 2022.



General Business



IRUA

BIOSCIENCE